

ORIGINAL  
SEISSIGER  
WILDKAMERA®



USER MANUAL

**Warnings:**

- **Danger!** indicates information that can lead to damage to the device or loss of data.
- **Note:** indicates special operating instructions.

## technical differences of the special-cams



Classic



LTE

photo resolution max. 12 MP	X	X
video resolution in HD*	X	X
sending photos		X
sending videos		X
data transport at radio transmission via		LTE
changing camera settings via cellular		X
connectivity an external one power source 6V	X	X
radio clock	X	X

\* up to 720p or 1080p, depending on the model

## what's included

- trailcamera
- tree strap
- tree tripod
- 12x AA/LR6/mignon alkaline batteries
- 32GB SDHC memory card
- antenna (wireless camera only)
- SUPERSIM prepaid multi-network card (only for wireless cameras)

If you would like a USB data cable for your game camera, please contact us and we will be happy to send you one free of charge.



[info@seissiger.com](mailto:info@seissiger.com)

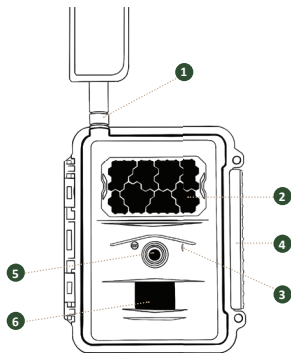


+49 (0) 931 41 79 79 80

# CONTENT

1.	major technical differences .....	03
2.	product overview .....	06
3.	switch and button functions .....	08
4.	establishing operational readiness .....	10
5.	menu navigation .....	13
	- camera settings .....	14
	- trigger settings .....	15
	- system settings .....	16
	- 2G and 4G .....	18
6.	SIM lock-free models .....	20
7.	use of the PC program for wireless camera (WINDOWS only) .....	23
8.	technical specifications .....	26
9.	remote control commands .....	28
10.	usage notices .....	30
11.	FAQ .....	32

## product overview

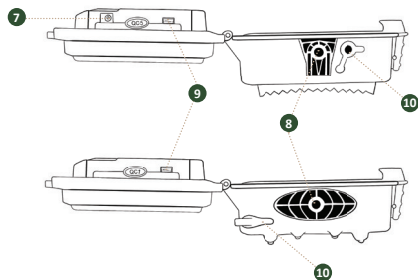


- ① antenna connector (only with sending models)  
Do not remove the sealing ring!
- ② invisible 940nm blackflash
- ③ microphone

- ④ closure
- ⑤ lens
- ⑥ motion sensor

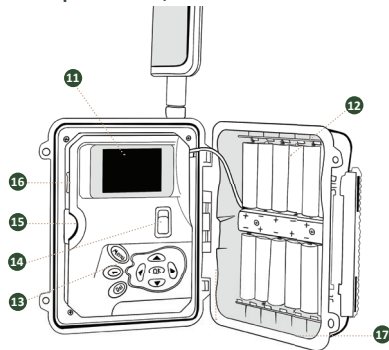


camera opened view, below



- 7 connection for external power supply
- 8 1/4"-20 camera thread
- 9 USB-port
- 10 connector cover for external power supply

camera opened view, inside



- 11 color TFT screen
- 12 battery compartments
- 13 control buttons
- 14 main switch
- 15 slot for SD card
- 16 slot for SIM card
- 17 O-ring seal

# switches & buttons functions

## main switch „ON / SETUP / OFF“

- ON: camera is operational
- SETUP: camera is in preview mode (live view)  
The screen shows what the camera is currently capturing. You can also access the menu from here.
- OFF: camera is off



## function of the buttons

(can only be operated in switch position SETUP)

### „Menu“ button

- to enter the settings menu from preview mode
- main switch from „OFF“ to „SETUP“ (= preview mode)
- press menu button



### „arrow“ keys

to move between the menu items and to change the setting parameters



### „OK“ button

for saving changes to the parameters in the setting menu and playing videos in preview mode





### the „Play“ button (viewing photos and videos)



- switch the main switch to the „SETUP“ position
- press the „Play“ button to view the most recently captured photos or videos
- press the „OK“ button to play videos
- press the „OK“ button again to stop playback
- press the button ◀ to view the previous photo or video and the button ▶ to view the next photo or video
- press the ▲ or ▼ button to adjust the magnification (zoom) when viewing photos
- press the „OK“ button and then the buttons ◀▶▼▲ to move the enlarged image section
- press the „Play“ button again to exit playback mode

### „Delete“ button (to delete)



- photos or videos in playback mode
- characters when entering phone number, email address or other parameters

### quick settings (shortcuts) in preview mode

- switch „▲“ button to video mode
- switch “▼” button to camera mode
- the OK button can be used to manually trigger the recording of photos or videos

## establishing operational readiness

1. Make sure the switch is in the OFF position. Insert batteries into the battery compartment. Pay attention to the correct orientation of the „+“ and „-“ poles. Insert twelve (recommended), eight, or at least four (emergency) AA batteries. Please use uniform batteries with the same state of charge. Alternatively, connect the camera to an external power source (six volt direct current/DC with 2000mA).

**When using a power supply unit, note its plug polarity:**



### Hints

- All commercially available AA batteries with a nominal voltage of 1.5 volts can be used. When using rechargeable AA batteries with a nominal voltage of 1.2 volts, they must have a **capacity** of at least 2500 mAh so that there are no malfunctions. AA batteries with a nominal voltage of 1.6 volts can be used without restrictions.
  - If a solar battery or another external power source is used at the same time, the batteries will not be charged!
2. Insert an SD memory card into the SD card slot. The camera supports SD memory cards up to a maximum of 32 GB. The write speed should be class 4 or higher. Refer to the SD card icon on the camera body for correct orientation. Please make sure that the SD memory card is not manually write protected (small slider on the card).

3. Wireless camera only: Insert a SIM card into the SIM card slot. Refer to the SIM card icon on the camera body for correct orientation.
4. Wireless camera only: Screw the antenna into the antenna connection. Screw the antenna flush onto the rubber ring.



**Do not overtighten the thread, otherwise moisture can enter the camera.**

5. Wireless camera only: Set the main switch to “SETUP”. The camera is now in preview mode and will start searching for a mobile network.
  - When using the SUPERSIM editions or when using a SUPERSIM card, the camera is already completely preset.
  - If you are using your own SIM card with a SEISSIGER WILDKAMERA, please continue with the chapter „Using the PC program for wireless cameras (Windows only)“.
6. If no mobile network is found when using a different SIM card, check whether the PIN code has been deactivated. If the SUPERSIM card used does not show a mobile network, make sure that this card has been properly registered in the SUPERSIM portal. If a mobile network is found, please continue with the next step.
7. Set the main switch to SETUP and press the menu button to enter the menu. To move between the submenus, press the or button. Press the ◀ - or ▶ - button to access the individual submenu items. Press the ▲ - or ▼ - button to change individual sub-menu settings. To save changes permanently, press the OK button.

8. Wireless camera only: Navigate to the 2G/4G/LTE submenu. Press the button ▼ to access the sub-menu items. Change the send mode to IMMEDIATE. Leave the submenu item „Send to“ on „E-Mail“ if you want to send via e-mail to one or more e-mail addresses. In most countries and with most SIM cards, this is the most economical way of sending pictures. However, you can also switch to MMS sending to phone number(s) here. Please note the costs that your mobile phone provider charges you for each MMS sent. Further down, in the sub-menu items „Telephone“ and „E-mail“ you can enter the receipt e-mail and telephone number(s).
9. You can exit the sub-menu items again by pressing the menu button. Press this button again to return to preview mode.
10. Press the OK button to manually capture a photo or video.
11. Press the play button to view already recorded photos or videos. With the two arrow keys ◀ and ▶ you can scroll back and forth between the files. Press the two arrow keys ▲ or ▼ to set the zoom factor (max. 8x) when viewing images. Then press the OK button to then use all arrow buttons ◀ and ▶. ▲ and ▼ to move the enlarged image section on the display to view details.
12. Press the play button to exit zoom mode.
13. You can delete individual pictures and videos you are currently viewing by pressing the DEL button. To delete all files, press the MENU button, then press the right arrow button and confirm „Delete All“ by pressing the OK button.

14. Press the PLAY button to return to the main menu.
  15. Place the camera on site. Place the switch in the ON position. The camera will now record photos or videos according to the programming you have made. The mounting height should be adapted to the objects to be photographed, one to three meters is usually ideal.
  16. Switch the main switch to the OFF position to turn the camera off again. Please note that the batteries will slowly discharge even if the main switch is in the OFF position. Therefore, please remove the batteries if you will not be using the camera for a long period of time.
- 

## Menu navigation

Set the main switch to the SETUP position and press the menu button. Use the arrow buttons ▲▼◀▶ to make the desired changes and then save them by pressing the OK button. There are four main menu items (only 3 for SEISSIGER Classic), which are symbolized by pictograms: „Camera“ (icon: camera), „Trigger“ (icon: clock), „System“ (icon: gear wheel) and, only for wireless models, also 2G/4G/LTE (symbol: 3 rising reception bars).

A dark oval button with the word "MENU" in white capital letters.



## camera settings

### Mode

Choose whether you want the camera to take photos, videos, or photos and a video at the same time.

### photo size

Select the resolution of the photos that are archived on the SD memory card here:

- „3 MP“ (2.048 x 1.536 Pixel / 3.145.728 Pixel)
- „5 MP“ (2.592 x 1.944 Pixel / 5.038.848 Pixel)
- „10 MP“ (3.648 x 2.736 Pixel / 9.980.928 Pixel)
- „12 MP“ (4.032 x 3.024 Pixel / 12.192.768 Pixel)
- MP = Megapixel

### burst shots

Number of pictures taken when triggered: 1, 2, 3, 4, 5 or 10. With wireless cameras, the first picture is sent.

### video resolution

Choice of video resolution:

- Full HD 1080P (1920 x 1080)
- HD 720P (1280 x 720)
- QVGA (320 x 240) or
- WVGA (800 x 480) it recommends the HD 720P setting

## video length

Here you can set the desired length, which your Videos should have: 1 to 30 seconds.

## video sound

Choose whether you want your videos to be recorded with or without sound.

---

## trigger settings



### sensitivity

Select the sensitivity of the motion detector (PIR / passive infrared sensor) between „high“, „normal“, „low“ and „off“.

### Sensor pause

Specify the length of the forced pause after each trigger here. For this period of time, the motion detector is inactive after each trigger.

### time lapse

Here you can specify whether the camera should trigger regularly at an interval to be set here, regardless of whether a movement is registered. If the sensitivity of the motion detector is not set to „off“ at the same time, it will also be triggered by movements.

## Timer

The camera can be set in such a way that it is generally only active at certain times or within certain time windows. To enable this function, select „on“ and press the „OK“ button. Now the timer menu opens. Here you can set when the time window should start and when it should end, how long the sensor pause should last, and whether or how the time lapse should work. If you use both timers 1 and 2, please make absolutely sure that the two time windows do not overlap.

## operating days

Use this item to set the days (Monday to Sunday) on which the camera should work. From the factory, the camera is switched on every day.

---

## system settings



### Clock

Setting the date and time.

### pictogram

Here you can set whether your images should be provided with a time stamp. This then shows on every picture the type of activation, the date, the time, the temperature, the moon phase and the battery status at the time of the respective recording.



## **Format SD**

Irrevocable deletion of all files located on the SD memory card.

## **overwrite**

If this function is switched on, the oldest recordings will be replaced by new ones when the SD card is almost full.

## **default settings**

Here you can reset all settings to the factory settings. In the case of a wireless camera, the shipping settings are set to SUPERSIM again.

## **device info**

Here you can see the module type, the hardware version (HW), the firmware version (FW) and, if the camera has already been online, the individual IMEI of your camera.IMEI: unique 15-digit serial number (International Mobile Station Equipment Identity)

## **Password**

Here you can enter a six-digit numeric password. This protects access to the menu

## **Language**

Here you can select the language of the menu navigation (German or English).

## **Keyton**

Here you can switch the key tone on and off.

## **LED flashes during PIR test**

Here you can switch the flashing of the green indicator light on or off.

## The following points are also available for the SEISSIGER Special-Cam LTE



### Time zone

Setting the time zone. Please note:

1: CEST winter time, 2: CEST summer time.

### Auto-time

When enabled, the camera will call out the date and time at regular intervals off automatically.

### check firmware

Manual check of the installed firmware version. If a newer update is available, it will be automatically installed by the camera.

### Auto Update

When enabled, the camera will automatically check for and install new updates at regular intervals.

---

## The following points apply to wireless cameras of the SUPERSIM editions and SIM-Lock-free 2G/LTE models



### send mode

Here you can choose whether recordings should be sent IMMEDIATELY, not at all (off) or only a daily report (daily report).

Select IMMEDIATELY and press the OK button to limit the number of images to be sent per day. The following applies here: 0 = unlimited

## remote control

Here you can switch on the camera's readiness to receive for remote control via 2-way communication.

Caution: If this is permanently activated, the power consumption increases significantly and the stand-by time is significantly reduced. It is then recommended to use an external power source. The camera only accepts commands from phone numbers that are also entered in the camera in the „Telephone“ area. All SUPERSIM editions are designed to be controlled via the SUPERSIM app or the SUPERSIM portal preset.

## sending image Size

Set the size of the sent preview image here:

- VGA = 640x480 pixels
- 1.2MP = 1280x960 pixels

## LTE-Cam

Original: the image will be sent in the size of the photo taken.

If the mobile network is too weak, the camera automatically reduces the size of the shipping image for the next shipment.

In order for the camera to send videos, the camera mode must be set to „Video“. If the camera mode is set to „Video“, the camera reduces the video resolution. If the video file is larger than 10 MB (4G) or 20 MB (LTE), sending will be aborted and the video resolution and length reduced for the next video.

## Quick Scan

When using a SUPERSIM card, pressing the OK button searches for a mobile network with good signal strength.

## Full Scan

When using a SUPERSIM card, the mobile network with the best signal strength is searched for by pressing the OK button.

---

## The following points apply to wireless cameras of the SIM lock-free models

### Send via

Choose here whether you want to send photos via MMS or via the Internet (recommended).

Note on the SMTP server settings:

The settings for using SUPERSIM are preset here. If you want to use a different SIM card, you must change it accordingly and enter your own e-mail outbound parameters. You cannot use the default SUPERSIM parameters.

Sending pictures via MMS with SUPERSIM is not possible. The LTE model also has the „SUPERSIM“ transmission type.

### Send to

Set here whether pictures should be sent to your e-mail, cell phone number (telephone) or to both at the same time (only possible with  
via MMS) should be sent.



## Phone

Here you can enter the recipient's cell phone number(s) for sending MMS pictures. These numbers are also able to control the camera via SMS command when the remote control is on. Please note the item „Remote control“ on the following page. For cameras without SIM lock must be used when using the SUPERSIM number 9998765 must be entered.

## E-Mail

Here you can enter the recipient e-mail address(es) for sending recordings by e-mail. If you use the supplied SUPERSIM card, please leave this point unchanged.

## Cameraname

Here you can give the camera a name. This is then displayed in the subject of the emails sent (not with use of SUPERSIM). Please do not use umlauts.

## PC-Program

The PC program required to set the camera to its own SIM card is copied to the SD memory card inserted in the camera. The PC program allows you to configure the transmission function of your camera more conveniently and more extensively.

## Copy Setup

Here you can copy the current settings from the camera to the SD card. This serves to provide another camera with the same settings quickly and conveniently. You can also edit these settings using the PC program.

## Setup from SD

Select this function if you have created the settings using the PC program or copied them from a device to the SD card and the settings file (.bin file) is on the SD card in the camera.

**Important, the settings file must be located directly on the inserted SD card.**

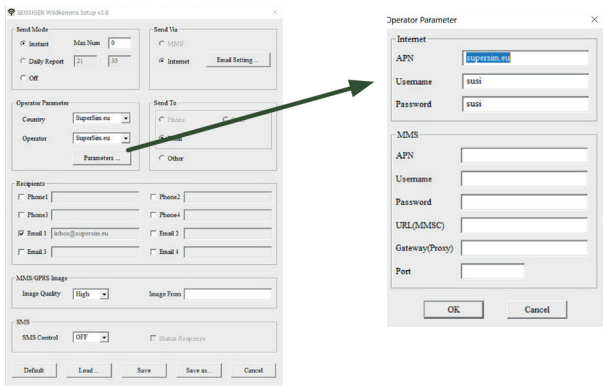
---

## Using the PC program for wireless camera (Windows only)

If you do not use a SUPERSIM card, you must enter the mobile network parameters manually via the PC program:

1. In the menu, go to the icon with the three bars (2G/4G/LTE) -> PC program. Start downloading the PC program from the camera to your SD memory card by pressing the OK button. This process only takes about 1 second.
2. Turn off the camera. Remove the SD memory card from the camera and insert it into the SD memory card slot of your computer (or connect the camera to your computer with a USB cable and use the camera as an external SD memory card reader on your computer ). Open the PC program „Wireless.exe“ on your computer
3. Now a setup window will open.

4. Fill in the fields with your setting parameters. Existing parameters are overwritten.
5. In the „Max Num“ field you can set a daily limit (i.e. a cap) for the daily image transmission. This quota then applies for 24 hours from 00:00:00 - 23:59:59. If you enter „0“, there is no limit, then theoretically any number of images can be sent.
6. „Operator Parameters“: Select „custom“ and enter the correct parameters from your mobile phone provider if they are not already pre-saved or if the pre-saved parameters are incorrect or no longer up-to-date





7. „Email Setting“: Enter the correct SMTP server and port of the sender email address. In order to ensure that you get your images sent reliably, you must provide your own email address use for your wireless camera. However, this does not apply when using the SUPERSIM card.

The image shows two windows from the SEISSIGER WiKamera Setup v2.8 application. The main window on the left is titled "SEISSIGER WiKamera Setup v2.8" and contains various configuration options. The "Send Via" section has "Internet" selected, with an "Email Setting..." button next to it. A green arrow points from this button to a secondary dialog box titled "Email Setting".

The "Email Setting" dialog box contains the following fields:

- Email Provider: SuperSim.eu (dropdown)
- Account (@xxx): sussi@supersim.eu
- Password: \*\*\*\*
- Re-Type Password: \*\*\*\*
- SMTP Server: supersim.eu
- SMTP Port: 587 (with a checked "SSL" checkbox)

At the bottom of the dialog are "OK" and "Cancel" buttons.

8. „Image Quality“: Here you determine the size (resolution, file size and thus also the amount of data) of the photos that are sent. With the „Normal“ setting, the sent images have a resolution of 640 x 480 pixels (VGA 0.3MP). It's 1280x960 pixels (1.2 MP) in the „High“ setting. The „High“ setting is recommended, since considerably more detail can be seen in the photos here than with „Low“. Please note that with large images, the battery consumption increases by about three times.
9. „Image From“: Here you can give the camera a name. This will then appear in the subject of the email sent. E-mails or MMS are displayed.
10. „SMS Status Response“: If this function is active, the camera will send the user an SMS response, after each SMS command.

---

## technical specifications

Photo resolution.	3MP / 5MP / 8MP / 10MP / 12MP
Photo format	JPEG
Video resolution.	1080p @30fps / 720p @30fps (recommended) / WVGA (800*480@30FPS) QVGA(320*240@30FPS)
Video format	MP4
Trigger delays	0.6 seconds ago
Lens	FOV (Field of View) = 42°
Lightning	940 Nm infrared LED (invisible)

Screen	2.0* LCD (5 cm screen diagonal)
SD capacity (SD)	Up to 32 GB
Shutter release	Motion detector (PIR) / timelapse / by comman (radio camera)
PIR sensitivity	Adjustable (high / normal / low / off)
Range PIR (Movement sensor)	Up to 25 meters
Range flash.	Up to 18 meters
Temperature	From -20 to max. +60° (operating temperature) from - 30 to max, +70° (storage temperature)
Trigger interval of	0 secondsh7- 60 minutes
Time-lapse interval	30 - 60 sec/ 1 - 60 min / 1 - 8 hours Continuous pictures 1 to 10
Video length	1 up to 30 seconds
Electricity supply	AA / LR6 / Mignon (1.5 volts): 4 x, 8 x or 12 x and/or external 6 volts 2000 mA DC power supply (DC) over 4.0 x 1.7
Power consumption in standby mode	Polarity: Indoor Plus, Outdoor Minus +0}-< 0.19mA when remote control function
Tan recording	2-3 mA when remote control function on selectable in video mode
Mounting thread	%-20* camera thread
Weight	0.38kg
Dimensions	15.3 x 12.4 x 9.0cm
humidity	5% - 90% in operation
protection class	IP67

## remote control commands

These are sent via SMS to the phone number of the SIM card in the camera.

Code	Status response	Code	Status response
*100#Nummer#	Phone number added	*200#2#	Set to video & picture mode
*101#Nummer#	Phone number deleted	*202#0#	PIR sensitivity high
*110#max@mustermann.de#	Email added	*202#1#	PIR sensitivity normal
*111#max@mustermann.de#	Email deleted	*202#2#	PIR sensitivity low
*120#0#	Send via MMS	*202#3#	PIR sensitivity off
*120#1#Hinweis: "send an" wird dann auf "E-mail gestellt	Send via Internet	*204#	SD Card was formatted
*130#0#	Send to phone		
*130#1#	Send to email		
*130#2#	Send to both		
*140#0#	Send instant photo		
*140#1#	Send daily report		
*140#2#	Send is off		
*200#0#	Set to photo mode		
*200#1#	Set to video mode		

Code	Status response
*205#YYYYMMDDHHMMSS	*205#201701010101
*209#0# Kein SMS Benachrichtigung nach ausgeführtem SMS Befehl *209#1# mit SMS Benachrichtigung nach ausgeführtem SMS Befehl	
*206#???????# Hinweis:?=,0" aus - ,1" an für den jeweiligen Wochentag von Montag bis Sonntag  Beispiel: *206#0000011# = Die Betriebstage sind hierbei Samstag und Sonntag.	All triggers enabled or disabled by this setting
*500# Hinweis: Sende-Modus darf nicht auf „aus“ stehen. 4G/LTE-Cam: Ist die Kamera im „Video-Modus“, Wird win Video aufgenommen und bei ausreichendem Empfang verschickt	Available at photo, photo+video,video mode, reply could be 1) Picture sending 2) Video sending 3) Send mode is off, sending stopped 4) max number, sending stopped 5)Execute fail
*160#	Signal status; Battery level 1-5, from low to full; SD card status
*170# Hinweis: Niedriger Standby-Stromverbrauch	SMS controll disabled
Beispiele: *180#0# (Kein Limit) *180#100# (Limit = 100) *180# (Zähler zurücksetzen)	*180#0# (no limit) *180#100# (reset to 100) *180# (clear the counter)
*190#0# für 640 x 480 Pixel *190#1# für 1280 x 960 pixel *190#2# für Originalbildgröße	

## usage notices

- A mounting height of 1.5 meters above the ground ensures good illumination and helps to avoid false alarms.
- If you want to use the wireless camera as a classic game camera without sending images, please deactivate the transmission mode and the remote control to save power.
- If the set limit of images to be sent per day is reached, image transmission will be stopped until the next day. If the remote control function is active, the limit can be adjusted or reset.
- If the SD memory card is full, recordings can still be made and sent. If the „Overwrite“ function is switched on, the oldest recordings are replaced by new ones. However, if the „Overwrite“ function is switched off, the new recordings are not archived on the SD card.
- The individual letters in the picture stamp mean:  
M = triggered by motion detectors (“Motion”)  
T = Triggered by time lapse („timer”)  
S = Triggered by manual remote control command \*500# („SMS”)  
E = Triggered by manual release on the camera
- Graphic battery charge icon in pictogram reflects power source voltage: three charge bars means full, no charge bars means empty. Even if it is half full, data transmission can be limited.
- To avoid false triggers, you must pay attention to the orientation of the camera. Make sure that there is no permanent heat source in the camera’s field of view. False tripping is also caused by vegetation that moves in the wind and is warmed up by the sun over the course of the day. The motion detector is a passive infrared sensor, i.e. a heat

sensor that reacts to moving, warm things. Unfortunately, this is not able to distinguish between a heated plant, which moves in the wind, and an animal.

- If the wireless camera suddenly stops sending pictures, please check:
  - whether the batteries still have enough voltage
  - Whether the SIM card still has credit or is active
  - whether the connection to the mobile network at the location of the camera is stable.
  - Please also check the condition of the SD memory card used. - The mechanical write protection of the SD memory card must not be active.

If the camera is reset to the factory settings, the camera is set to the delivery status again. All settings for sending images with SUPERSIM in the case of a wireless camera are preset again.

- 4G-Cam: Video could be sent in video camera mode and „Immediate“ transmission mode. However, make sure that the camera in the installation location also shows the 3G signal strength in addition to the provider. If the video sequence recorded is larger than 10 MB, the transmission process would be aborted and the camera would set the video resolution to WVGA and a video length of 10 seconds.
- LTE-Cam: Video could be sent in video camera mode and „Immediate“ transmission mode. However, make sure that the camera in the installation location also shows the signal strength 3G/LTE in addition to the provider. If the recorded video sequence is larger than 20 MB, the sending process would be aborted and the camera would set the video resolution to WVGA and a video length of 10 seconds.
- It's a good idea to test the data speed at the location by manually sending an image. If your 4G/LTE cam can only connect to a 2G data network, please do not try to send an original photo or video sequence.

- Please do not use inferior batteries or mix batteries of different states of charge.
- Clean the camera seal regularly to protect it from moisture ingress.
- When the batteries are weak, the set video length is not reached (e.g. 20 seconds set but only a few seconds are recorded and saved). This error can be rectified by replacing the batteries. Data transmission can also be restricted if the batteries are half full.

---

## FAQ (Frequently Asked Questions)

**Question:** How do I send an image manually?

**Answer:** Press the „OK“ button in preview mode (provided the network connection is stable, the signal is strong enough, the 2G settings are all correct and the transmission mode is set to „immediate“), then a photo is taken and you can choose to send it immediately.

**Question:** How can I prevent my camera from frequently taking pictures without an animal being visible?

**Answer:** There are several possible reasons for this: - The passive infrared sensor reacts to moving, warm objects. For example, if there are twigs or branches in front of the camera and they are heated by the sun, their Movement, e.g. caused by wind, can cause false triggering.  
- Another possibility is that an object has moved very close and/or very quickly past the camera and the triggering took place shortly thereafter.

**Question:** Why are the night shots not as sharp as during the day?

**Answer:** The exposure time at night is longer, so moving objects can be blurred become. If you have any further questions, our customer service will be happy to help you.



**SIMPLIFIED EU DECLARATION OF CONFORMITY**

**Anton Seissiger GmbH hereby declares that the radio system type [SL-197742-65, 197742-65, SL-187872, 187872-65] complies with Directive 2014/53/EU.**

**The full text of the EU declaration of conformity is available at the following internet address:**

<https://www.seissiger-wildkamera.eu/wildkamera-anleitungen/>

**Anton Seissiger GmbH**

Robert-Bosch-Str. 9  
97209 Veitshöchheim  
Germany